

# VOLVO CONSTRUCTION EQUIPMENT MATRIS REPORT

Machine model <b>L180G</b>	SerialNo <b>19633</b>	Operating Hours <b>10977</b>	Reading Date <b>3/22/2017</b>
Company name <b>VCES Sacramento</b>	Dealer <b>vc</b>	Report Issuer	
Contact name	Technician <b>awarner</b>	Primary Application <b>Shot Rock</b>	
Site	Workorder	Ground Condition	

MATRIS Reading, Summary / Recommendation



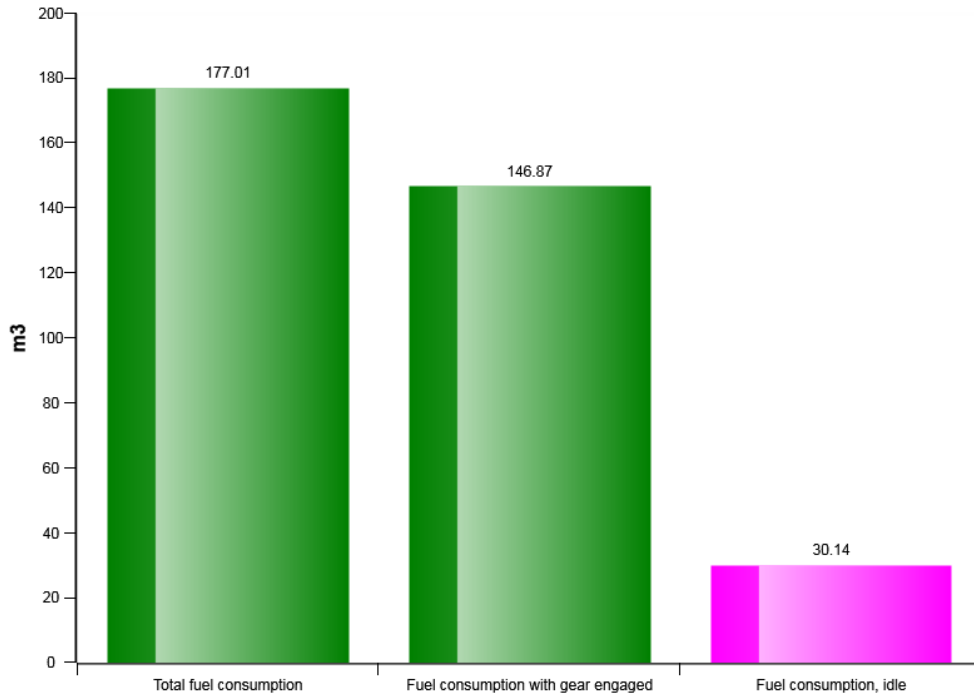
Machine model	SerialNo	Operating Hours	Reading Date
L180G	19633	10977	3/22/2017

Main equipment	Type	Equipment
	Tyre size/class	Sold without tyres
	Main Attachment	Sold without attachment
	Extra Counterweight	None
	Ballast	None
	Chains	Not mounted
	Boom Suspension System	Not mounted
	Attachment Interface	Pin-on
	Volume m3 (yd3) / Area m2 (ft2)	
	Attachment make	
	Brake	
	Transmission	

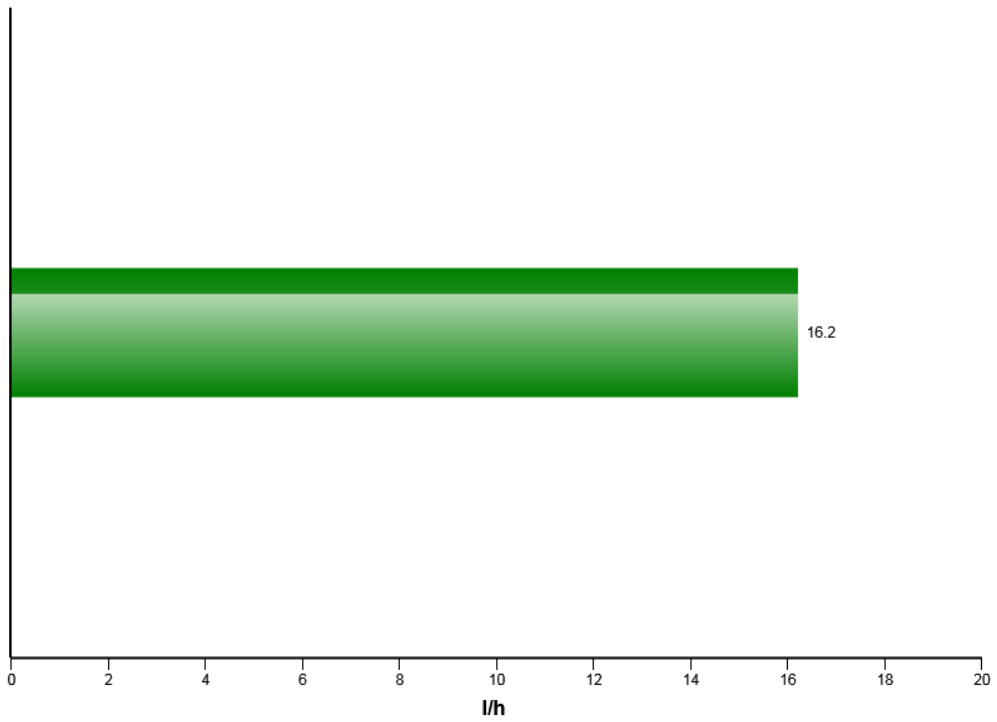


Machine model	SerialNo	Operating Hours	Reading Date
L180G	19633	10977	3/22/2017

### Fuel consumption

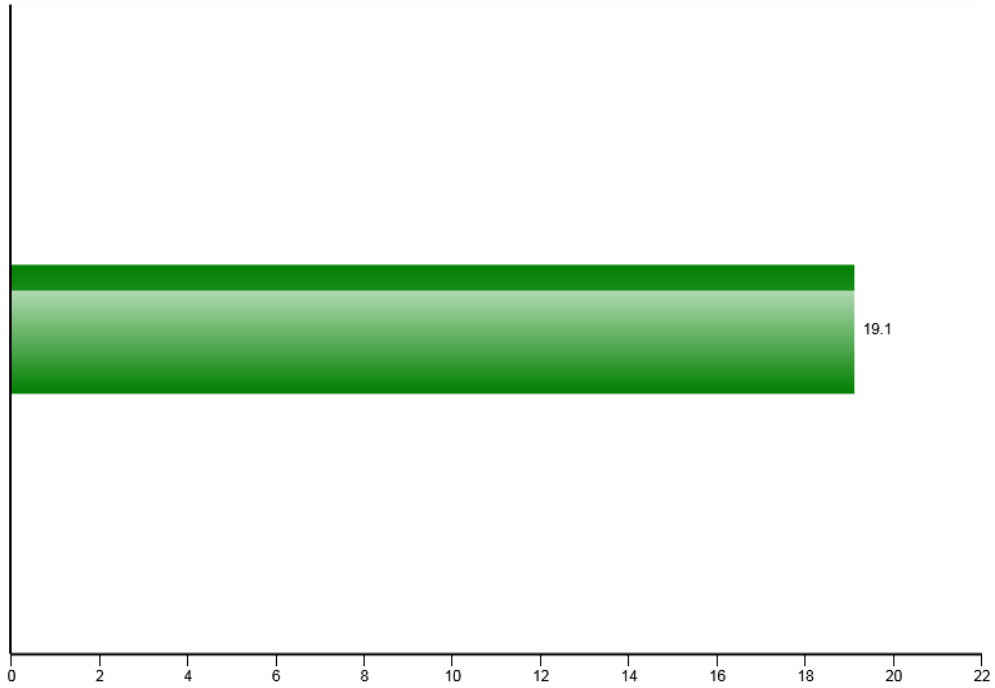


### Average fuel consumption per hour

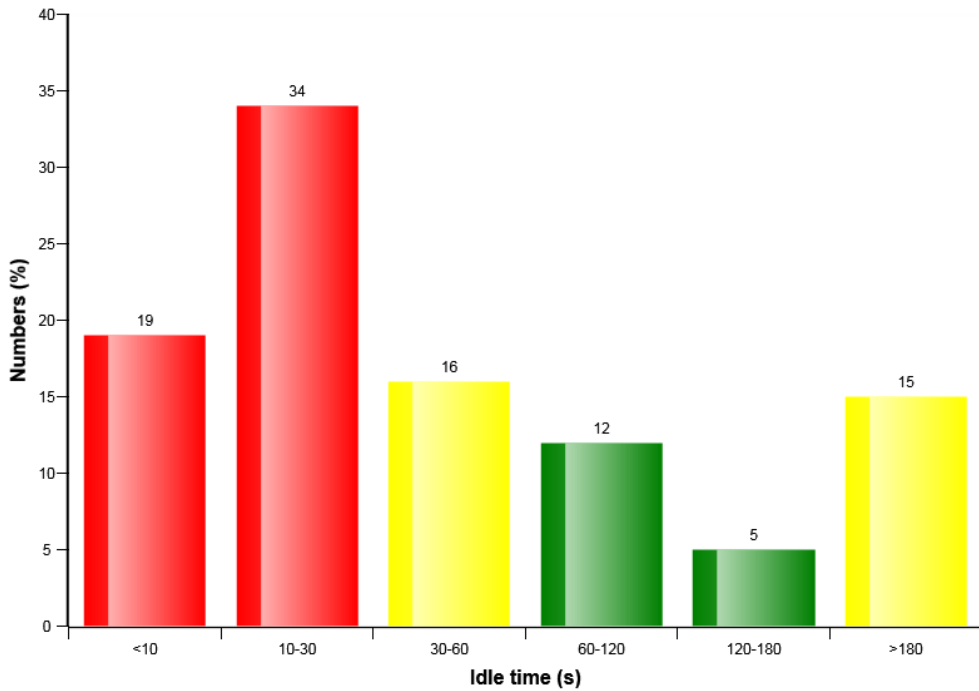


Machine model	SerialNo	Operating Hours	Reading Date
L180G	19633	10977	3/22/2017

### Average fuel consumption per hour with gear engaged



### Idle time before shut down (%)



Low speed shutdown= 9367  
 Total number of engine shutdowns= 9405



Machine model	SerialNo	Operating Hours	Reading Date
L180G	19633	10977	3/22/2017

**Starter overheating**  
**Total number of occurrences = 11**

Op hours	Year	Month	Day	Hour	Minute
0	2000	0	0	0	0
0	2000	0	0	0	0
0	2000	0	0	0	0
0	2000	0	0	0	0
0	2000	0	0	0	0
0	2000	0	0	0	0
0	2000	0	0	0	0
0	2000	0	0	0	0
0	2000	0	0	0	0
0	2000	0	0	0	0
1648	2013	11	18	4	32
1648	2013	11	18	5	14
1648	2013	11	18	5	11
1648	2013	11	18	4	39
1648	2013	11	18	4	33
1648	2013	11	18	4	33
4251	2014	6	24	21	24
4251	2014	6	24	21	22
4251	2014	6	24	21	22
4251	2014	6	24	21	23
4251	2014	6	24	21	24



Machine model	SerialNo	Operating Hours	Reading Date
L180G	19633	10977	3/22/2017

**Regeneration aborted**  
**Total number of occurrences = 559**

Op hours	Year	Month	Day	Hour	Minute
0	2037	28	100	42	1
0	2051	52	112	42	1
0	2017	12	111	42	1
0	2041	1	112	42	1
0	2010	4	103	42	1
0	2037	44	104	42	1
0	2007	21	100	42	1
1541	2001	0	0	0	16
1797	2001	0	0	0	16
2053	2001	0	0	0	16
2305	2001	0	0	0	16
3329	2001	0	0	0	16
3585	2001	0	0	0	16
10852	2016	7	1	9	0
10855	2016	7	1	12	30
10856	2016	7	1	14	0
10860	2016	7	1	20	16
10864	2016	7	5	7	0
10864	2016	7	5	8	13
10864	2016	7	5	9	16



Machine model	SerialNo	Operating Hours	Reading Date
L180G	19633	10977	3/22/2017

**Regeneration intervals**  
**Total number of occurrences = 1808**

Op hours	Year	Month	Day	Hour	Minute	Duration (min)
10911	2016	9	2	12	39	20
10911	2016	9	2	12	25	8
10912	2016	9	2	14	50	32
10912	2016	9	2	14	12	7
10912	2016	9	2	13	51	2
10912	2016	9	2	13	37	5
10912	2016	9	2	13	20	11
10913	2016	9	2	15	26	182
10916	2016	9	3	3	53	3
10916	2016	9	3	3	42	3
10916	2016	9	6	5	59	28
10916	2016	9	3	4	22	8
10916	2016	9	6	5	50	3
10917	2016	9	6	11	45	53
10918	2016	10	28	9	49	58
10918	2016	10	28	9	41	3
10919	2017	3	13	11	57	9
10919	2017	3	13	6	34	19
10920	2017	3	14	13	21	1
10921	2017	3	14	14	29	24



Machine model	SerialNo	Operating Hours	Reading Date
L180G	19633	10977	3/22/2017

**Water level warning in water separator  
Total number of occurrences = 26**

Op hours	Year	Month	Day	Hour	Minute	Duration (min)
4884	2014	8	22	23	3	18
4919	2014	8	26	9	8	4
5017	2014	9	4	0	28	39
5589	2014	10	31	9	3	8
6385	2015	1	16	18	16	134
6487	2015	1	26	21	21	117
6692	2015	2	12	20	39	107
7211	2015	4	9	11	59	19
7254	2015	4	14	17	16	322
7622	2015	5	26	22	50	3
7693	2015	6	2	20	37	133
8200	2015	7	22	21	6	87
8276	2015	7	31	21	17	134
8280	2015	8	1	6	57	56
8292	2015	8	3	17	27	59
8351	2015	8	7	7	44	7
8416	2015	8	14	5	32	103
8566	2015	8	27	10	16	11
9417	2015	12	1	13	1	107
10532	2016	4	18	20	58	52





Machine model	SerialNo	Operating Hours	Reading Date
L180G	19633	10977	3/22/2017

**Regeneration duration**  
**Total number of occurrences = 2244**

Op hours	Year	Month	Day	Hour	Minute	Duration (min)
10911	2016	9	2	12	22	3
10911	2016	9	2	12	36	3
10912	2016	9	2	14	47	3
10912	2016	9	2	13	17	3
10912	2016	9	2	13	34	3
10912	2016	9	2	13	48	3
10912	2016	9	2	14	9	3
10913	2016	9	2	15	23	3
10916	2016	9	6	5	55	4
10916	2016	9	3	3	42	0
10916	2016	9	3	3	50	3
10916	2016	9	3	4	22	0
10916	2016	9	6	5	48	3
10917	2016	9	6	11	42	3
10918	2016	10	28	9	31	1
10918	2016	10	28	9	46	4
10918	2016	10	28	9	39	3
10919	2017	3	13	11	54	3
10919	2017	3	13	6	31	3
10920	2017	3	14	13	4	84



Machine model	SerialNo	Operating Hours	Reading Date
L180G	19633	10977	3/22/2017

**Regeneration ignored**  
**Total number of ignored regenerations 134**

Op hours	Year	Month	Day	Hour	Minute	Duration (min)
* 10918	2017	1	16	7	57	16
* 10918	2017	1	16	7	16	0
* 10918	2016	12	9	12	54	0
* 10918	2016	11	22	7	53	2
* 10918	2016	11	10	16	58	1
* 10918	2017	1	16	7	18	0
* 10918	2017	1	16	7	23	6
* 10919	2017	3	6	10	12	0
* 10919	2017	3	6	10	28	0
* 10919	2017	3	6	10	8	0
* 10919	2017	3	13	11	35	10
* 10919	2017	3	13	11	47	15
* 10919	2017	3	13	13	0	16
* 10919	2017	3	14	13	1	87
* 10919	2017	3	6	9	57	0
* 10919	2017	1	16	11	12	1
* 10919	2017	1	16	11	6	4
* 10919	2017	1	16	10	58	1
* 10919	2017	3	6	10	11	0
* 10919	2017	3	13	6	22	27



Machine model L180G	SerialNo 19633	Operating Hours 10977	Reading Date 3/22/2017
------------------------	-------------------	--------------------------	---------------------------

**AC Boiling Protection**  
**Number of engagements = 0**

Op hours	Year	Month	Day	Hour	Minute	Duration (sec)	Extreme (°C)
0	2000	0	0	0	0	0	0
0	2000	0	0	0	0	0	0
0	2000	0	0	0	0	0	0
0	2000	0	0	0	0	0	0
0	2000	0	0	0	0	0	0
0	2000	0	0	0	0	0	0
0	2000	0	0	0	0	0	0
0	2000	0	0	0	0	0	0
0	2000	0	0	0	0	0	0
0	2000	0	0	0	0	0	0
0	2000	0	0	0	0	0	0
0	2000	0	0	0	0	0	0
0	2000	0	0	0	0	0	0
0	2000	0	0	0	0	0	0
0	2000	0	0	0	0	0	0
0	2000	0	0	0	0	0	0
0	2000	0	0	0	0	0	0
0	2000	0	0	0	0	0	0
0	2000	0	0	0	0	0	0
0	2000	0	0	0	0	0	0
0	2000	0	0	0	0	0	0
0	2000	0	0	0	0	0	0
0	2000	0	0	0	0	0	0
0	2000	0	0	0	0	0	0
0	2000	0	0	0	0	0	0
0	2000	0	0	0	0	0	0



Machine model	SerialNo	Operating Hours	Reading Date
L180G	19633	10977	3/22/2017

**AC High Pressure**  
**Total number of occurrences = 729**

Op hours	Year	Month	Day	Hour	Minute	Duration (sec)	Extreme (° C)
10910	2016	7	1	11	58	5	24
10910	2016	7	1	12	20	7	22
10910	2016	7	1	11	52	4	23
10910	2016	7	1	12	16	69	23
10911	2016	7	1	14	27	8	23
10911	2016	7	1	14	19	473	24
10911	2016	7	1	13	27	7	23
10911	2016	7	1	13	17	24	24
10911	2016	7	1	13	8	7	24
10911	2016	7	1	13	4	4	23
10912	2016	7	1	14	45	3327	23
10913	2016	7	1	16	23	306	22
10913	2016	7	1	17	10	1106	22
10913	2016	7	1	16	48	283	22
10913	2016	7	1	16	8	55	25
10914	2016	7	1	19	0	450	19
10914	2016	7	1	18	59	0	29
10914	2016	7	1	18	28	94	20
10974	2016	11	8	10	50	97	26
10976	2017	3	14	14	34	9	28



Machine model	SerialNo	Operating Hours	Reading Date
L180G	19633	10977	3/22/2017

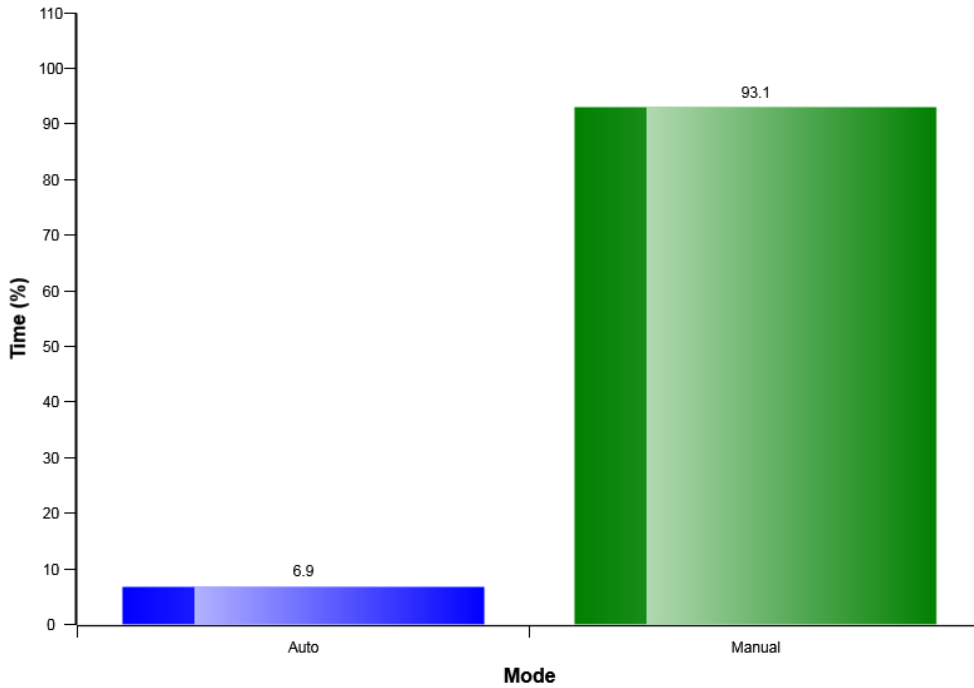
**Low engine oil level at start  
Total number of occurrences = 4**

Op hours	Year	Month	Day	Hour	Minute
* 0	2000	0	0	0	0
* 0	2000	0	0	0	0
* 0	2000	0	0	0	0
* 0	2000	0	0	0	0
* 0	2000	0	0	0	0
* 0	2000	0	0	0	0
* 0	2000	0	0	0	0
* 0	2000	0	0	0	0
* 0	2000	0	0	0	0
* 0	2000	0	0	0	0
* 0	2000	0	0	0	0
* 0	2000	0	0	0	0
* 0	2000	0	0	0	0
* 0	2000	0	0	0	0
* 0	2000	0	0	0	0
* 0	2000	0	0	0	0
* 0	2000	0	0	0	0
* 0	2000	0	0	0	0
* 0	2000	0	0	0	0
* 0	2000	0	0	0	0
* 0	2000	0	0	0	0
* 0	2000	0	0	0	0
* 9577	2015	12	16	8	51
* 9577	2015	12	16	8	37
* 9577	2015	12	16	8	36
* 9577	2015	12	16	8	34

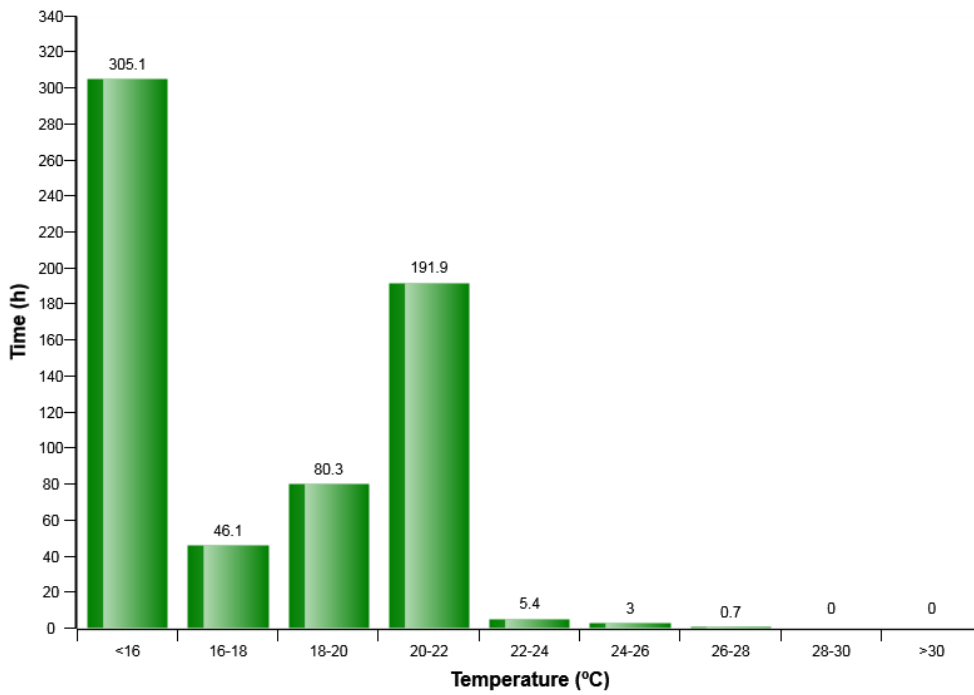


Machine model	SerialNo	Operating Hours	Reading Date
L180G	19633	10977	3/22/2017

### HVAC Auto - Manual mode selection distribution (%)

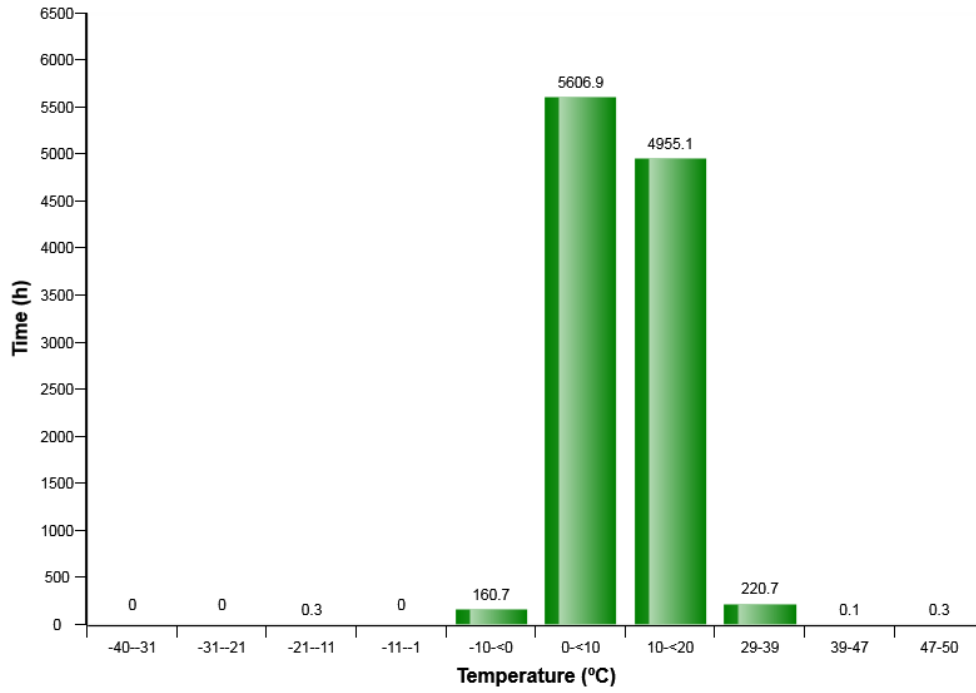


### HVAC air temperature setting in auto control mode distribution (h)

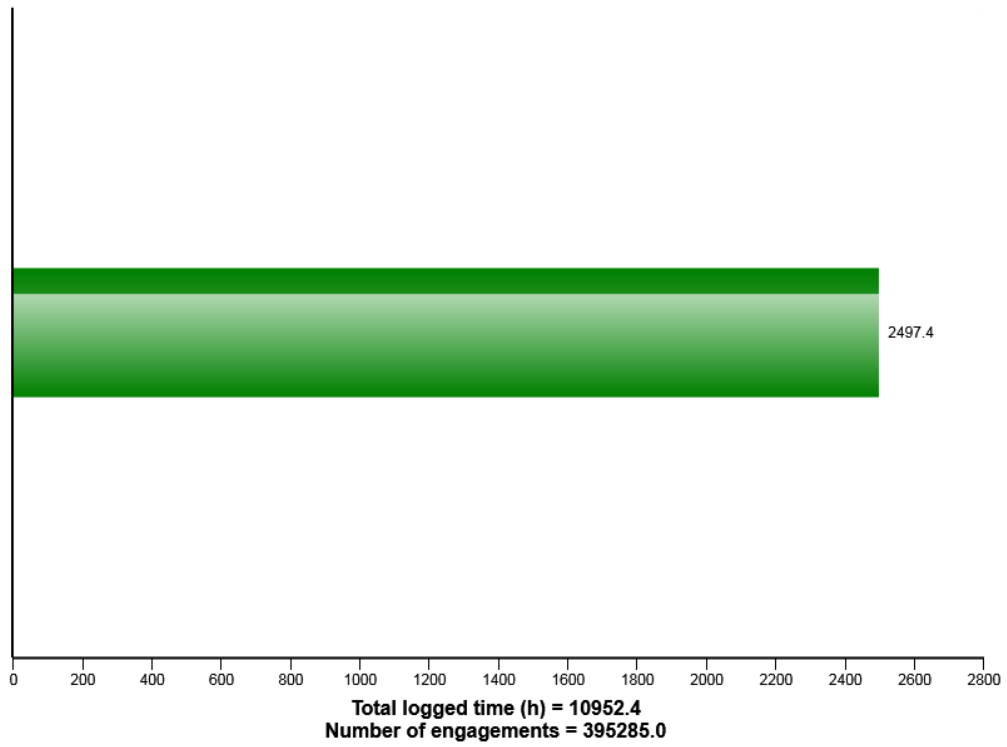


Machine model	SerialNo	Operating Hours	Reading Date
L180G	19633	10977	3/22/2017

### Machine ambient temperature distribution (h)

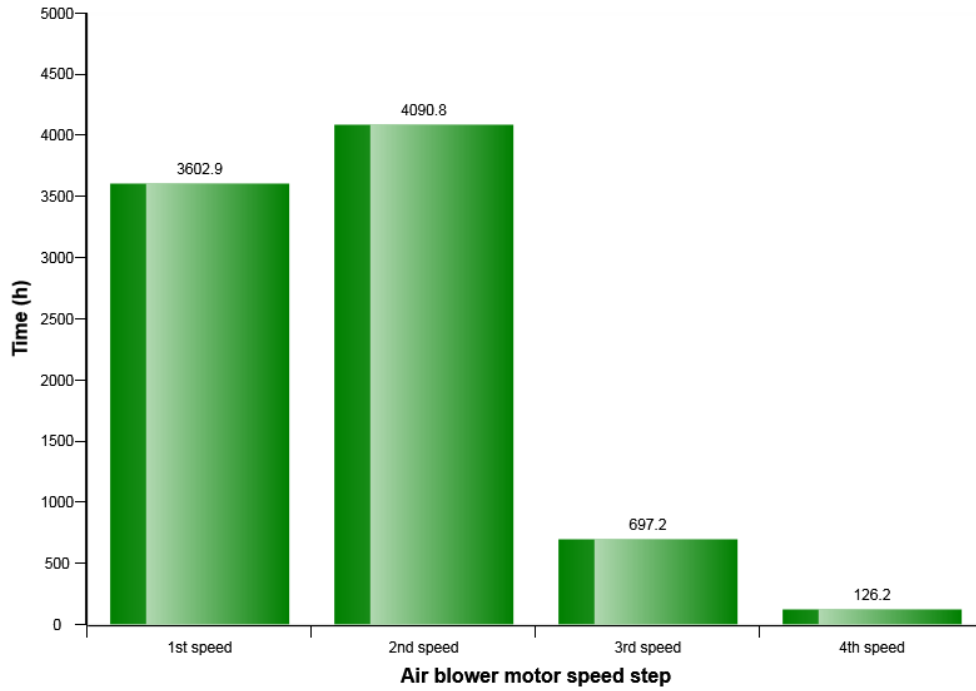


### AC Compressor usage



Machine model	SerialNo	Operating Hours	Reading Date
L180G	19633	10977	3/22/2017

### HVAC air blower motor speed in manual mode distribution (h)



### Average fuel consumption per hour 2

